

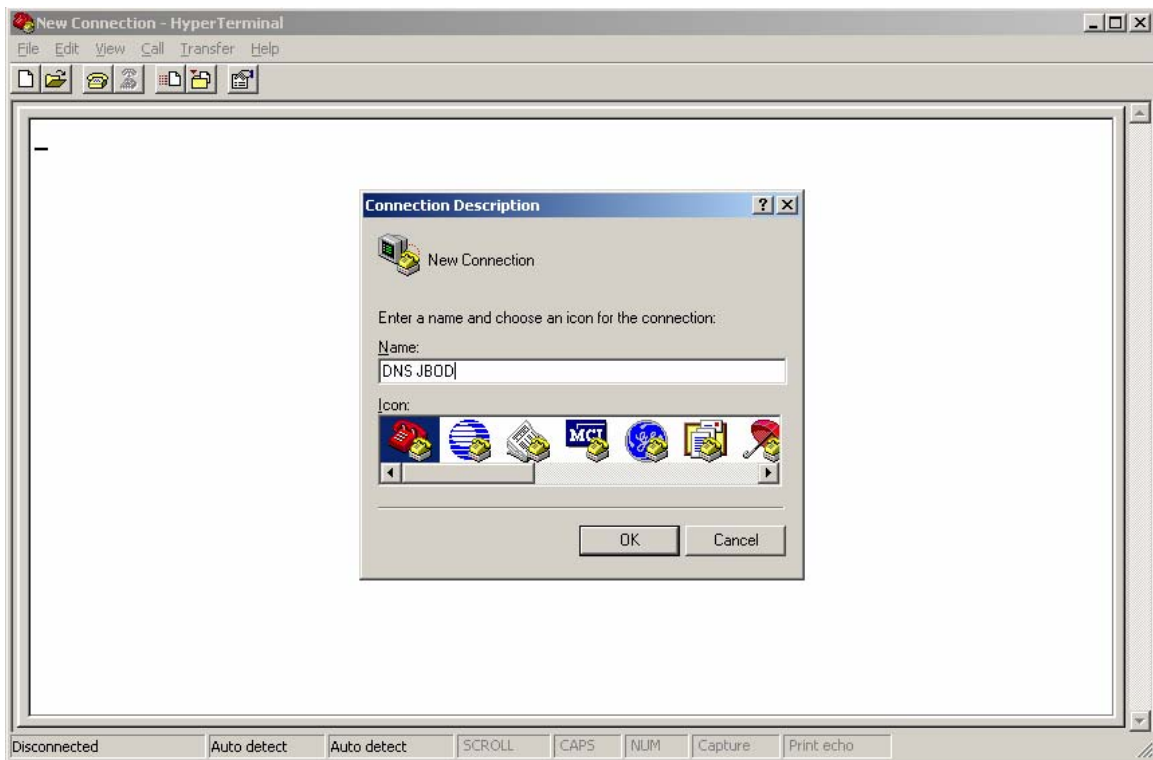
## Quick Start Guide for Upgrading FW on DNS-1200 or DNS-1400

### Please prepare the following items before upgrading

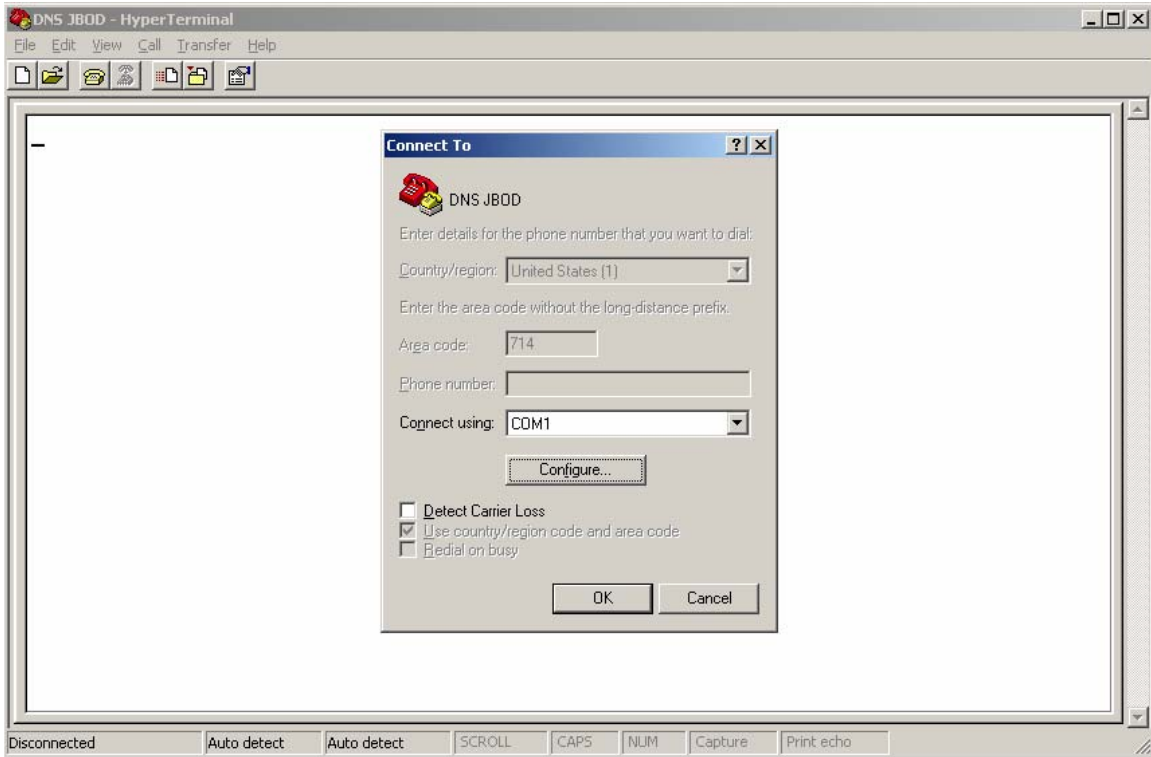
1. DNS1200/DNS-1400 Console Cable connected to the host
2. Latest DNS-1200 or DNS-1400 FW
3. If the unit have dual SIM (SAS IO module), please physically remove one and update them one by one.
4. DNS-1200 must currently contains 1A55 or later; DNS-1400 must currently contains 2A51 or later.

### Steps to upgrade the firmware

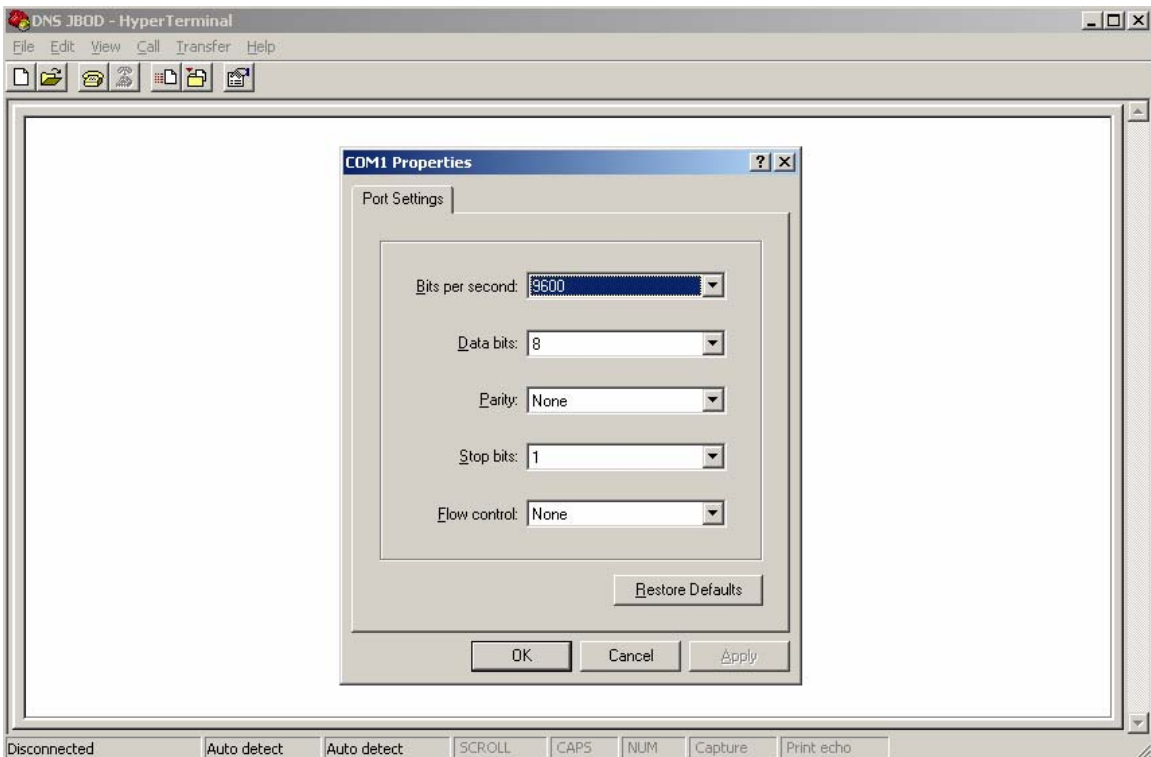
- 1) Connect the DNS-1200/DNS-1400 Console Cable to Serial port of the host
- 2) Run HyperTerminal and create new connection



3) Select serial port. In this Example, COM1 is selected

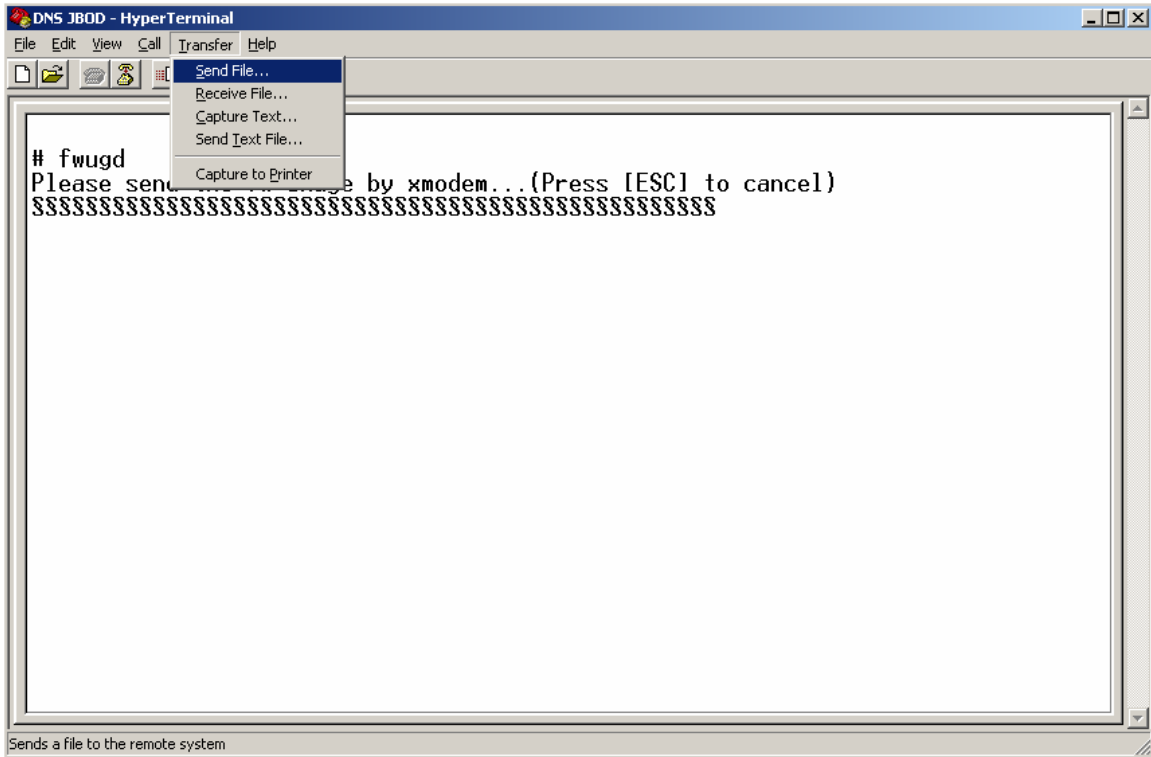


4) Select 9600 as Bits per second

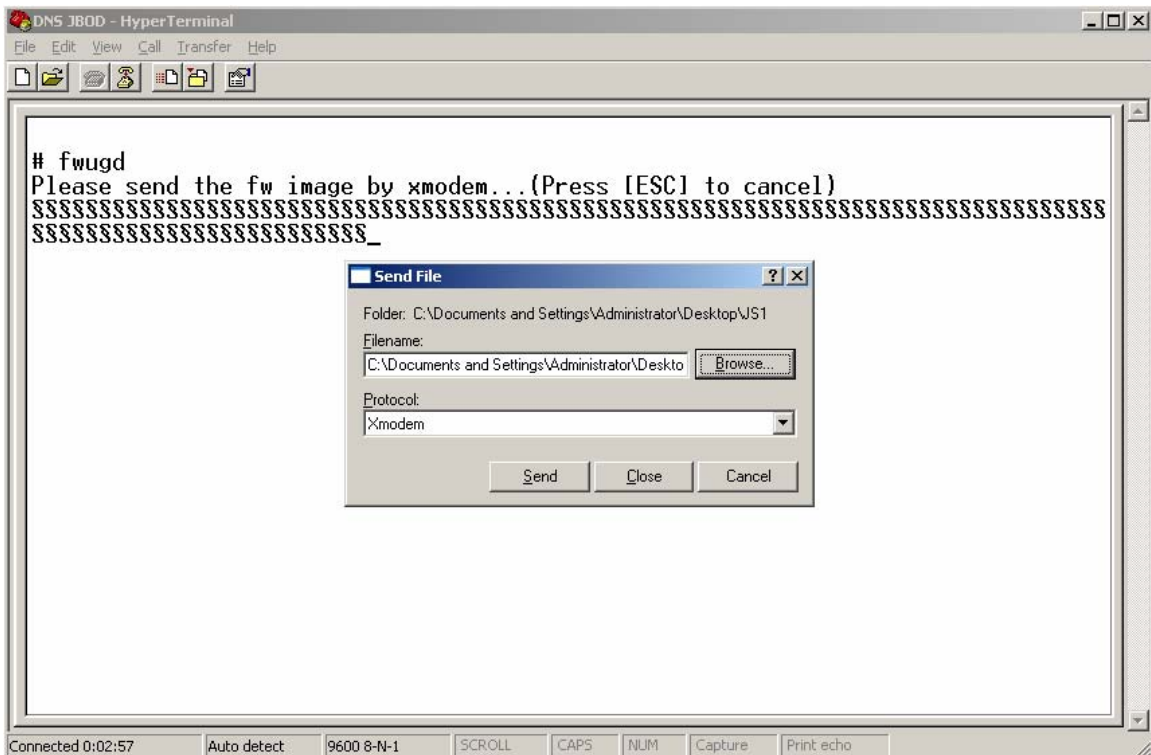




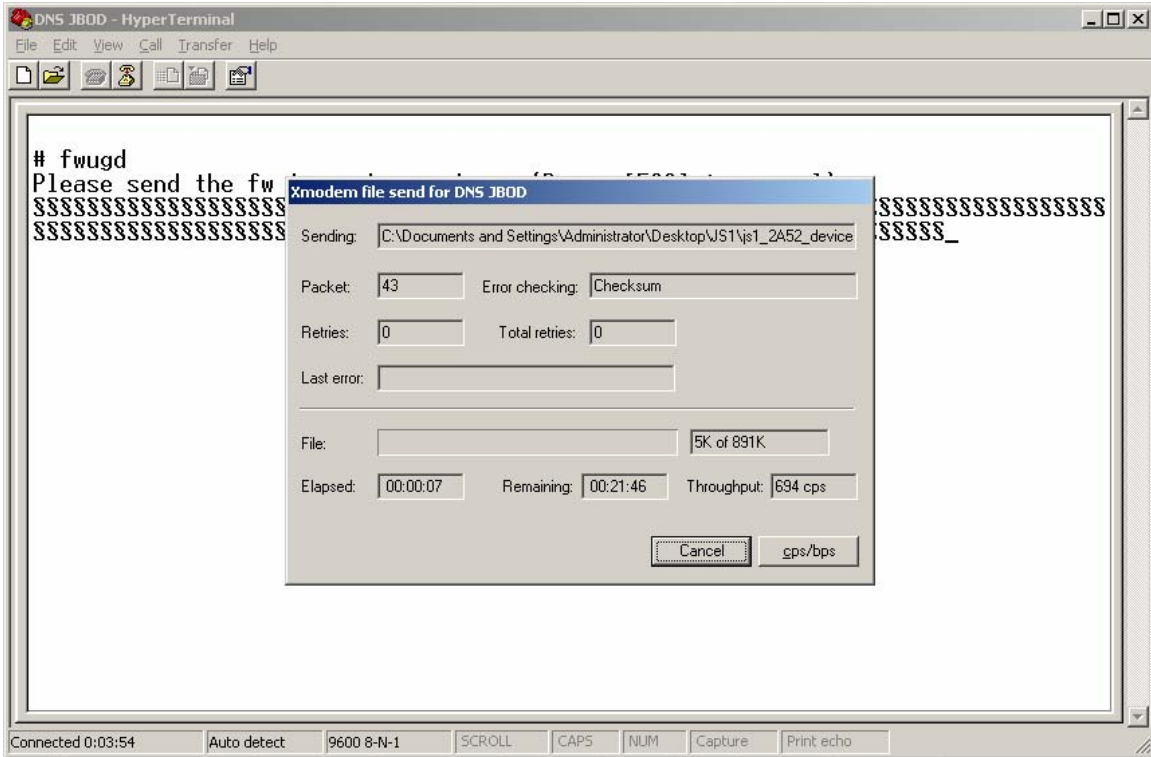
7) Click "Transfer" -> "Send File"



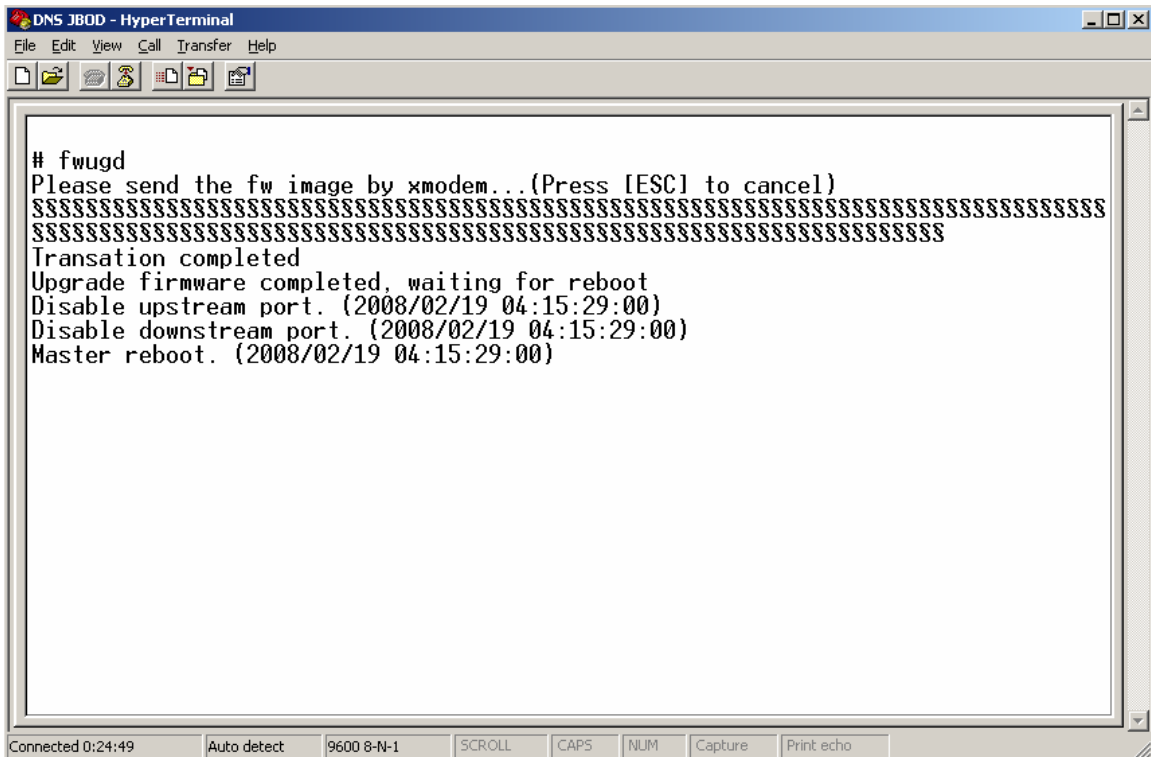
8) Choose "Xmodem" as Protocol and select the new firmware. Then click "send".



9) Firmware will be started to transfer

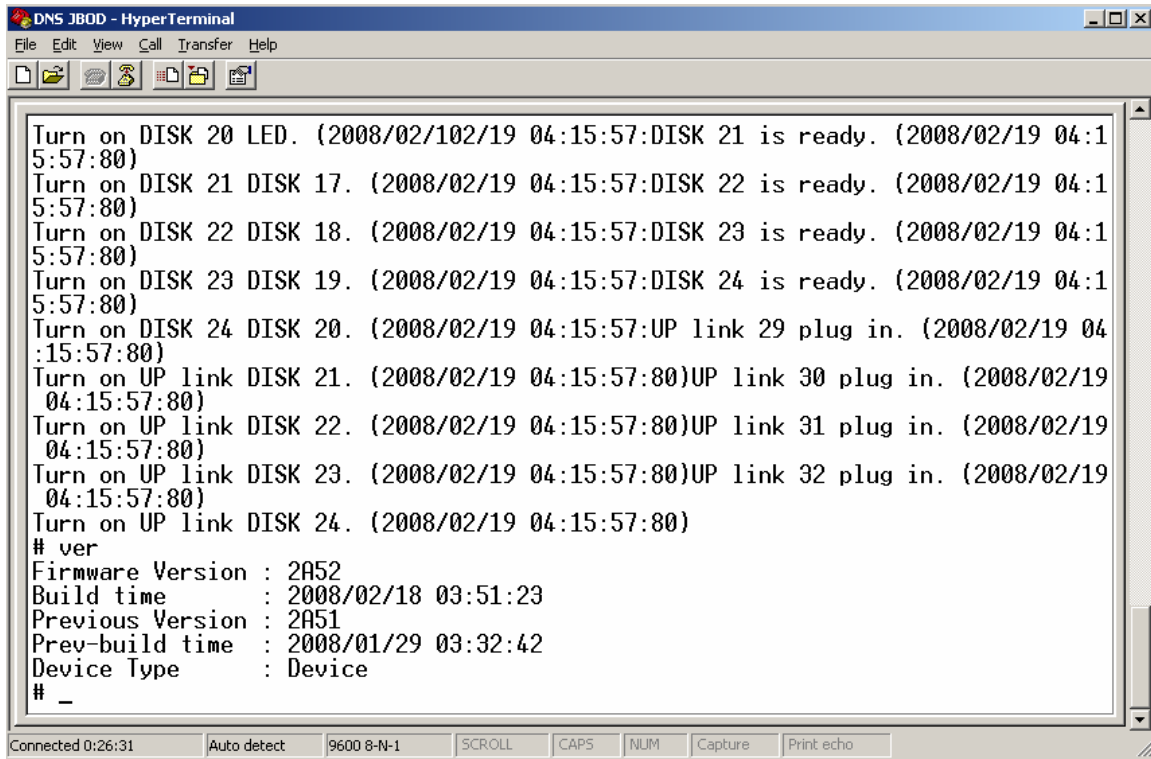


10) After about 20 minutes, the transition will complete.



## Quick Start Guide for Upgrading FW on DNS-1200 or DNS-1400

- 11) After Firmware updating and type "ver" will to make sure the latest FW has been upgraded successfully



```
DNS JBOD - HyperTerminal
File Edit View Call Transfer Help
Turn on DISK 20 LED. (2008/02/10/2/19 04:15:57:DISK 21 is ready. (2008/02/19 04:15:57:80)
Turn on DISK 21 DISK 17. (2008/02/19 04:15:57:DISK 22 is ready. (2008/02/19 04:15:57:80)
Turn on DISK 22 DISK 18. (2008/02/19 04:15:57:DISK 23 is ready. (2008/02/19 04:15:57:80)
Turn on DISK 23 DISK 19. (2008/02/19 04:15:57:DISK 24 is ready. (2008/02/19 04:15:57:80)
Turn on DISK 24 DISK 20. (2008/02/19 04:15:57:UP link 29 plug in. (2008/02/19 04:15:57:80)
Turn on UP link DISK 21. (2008/02/19 04:15:57:80)UP link 30 plug in. (2008/02/19 04:15:57:80)
Turn on UP link DISK 22. (2008/02/19 04:15:57:80)UP link 31 plug in. (2008/02/19 04:15:57:80)
Turn on UP link DISK 23. (2008/02/19 04:15:57:80)UP link 32 plug in. (2008/02/19 04:15:57:80)
Turn on UP link DISK 24. (2008/02/19 04:15:57:80)
# ver
Firmware Version : 2A52
Build time       : 2008/02/18 03:51:23
Previous Version : 2A51
Prev-build time  : 2008/01/29 03:32:42
Device Type     : Device
# _
Connected 0:26:31  Auto detect  9600 8-N-1  SCROLL  CAPS  NUM  Capture  Print echo
```

- 12) Power off DNS-1200 or DNS-1400 and restart.